

COMBIFIT

METAALBEWERKING B.V.

HYGIENIC COUPLINGS

DATASHEET

| | Page |
|--|------|
| General information | 2 |
| Combifit T-seals (ISO 2853, BS 4825 part 4) | 3 |
| Combifit Tri-Clamp seals (DIN 32676 (C), BS 4825 part 3) | 4 |
| Combifit Tri-Clamp seals (ISO 2852, DIN 32676 (A-B), BS 4825 part 3) | 5 |
| Combifit Flat-seals | 6 |

In all cases in which we act as offeror or supplier, our offers, assignments given to us and agreements concluded with us are subject to the METAALUNIE TERMS AND CONDITIONS. These terms and conditions have been filed at the registry of the Rotterdam District Court. A copy is available.

Platinastraat 20
2718 RZ Zoetermeer
The Netherlands

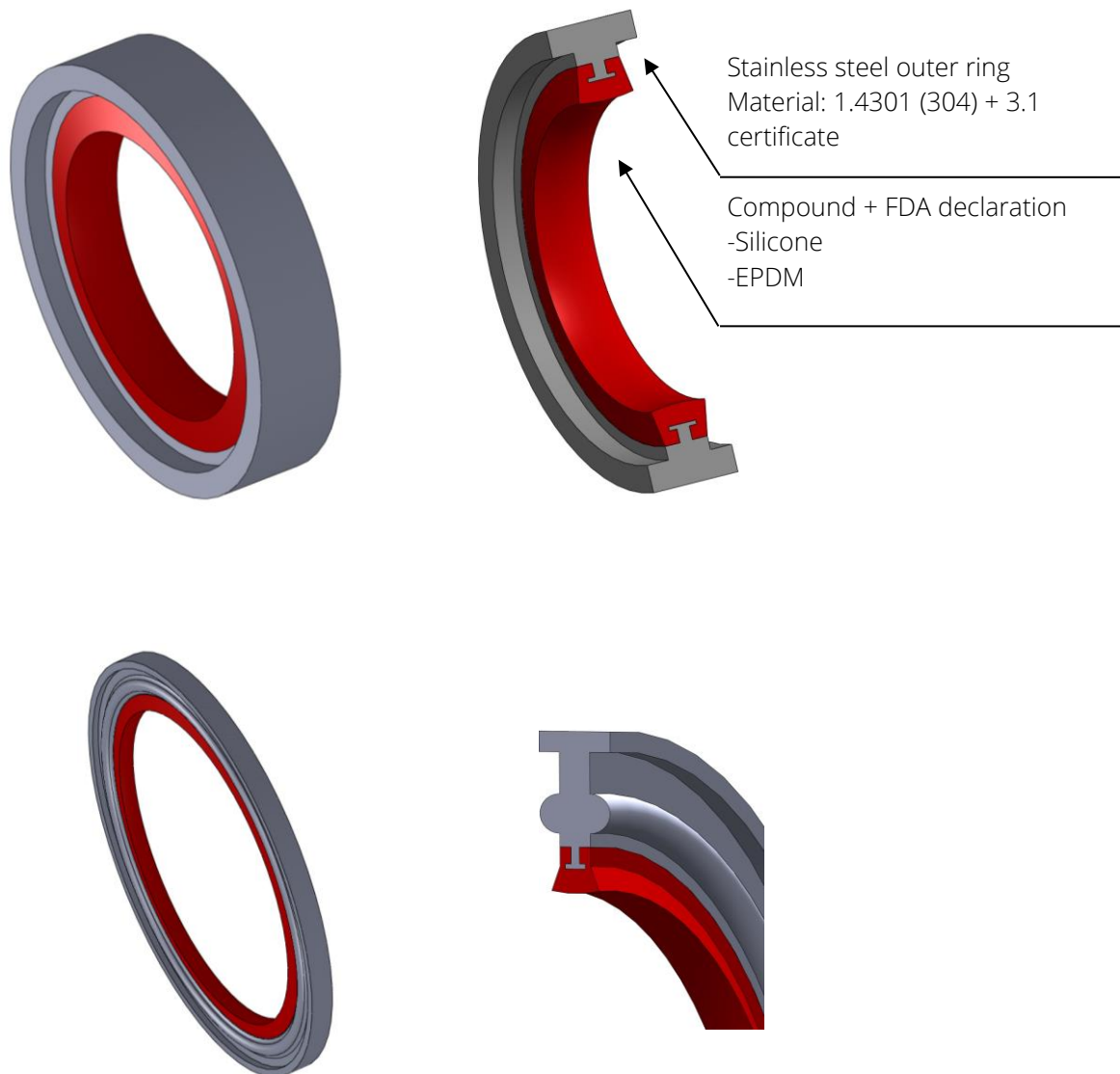
+31 (0)79 3614929
✉ info@combifitmetaalbewerking.nl
🌐 www.combifitmetaalbewerking.nl

IBAN NL42 RABO 0307 2930 68
BIC RABONL2U
BTW/VAT NL 8077 19 468 B01
KVK 27176957

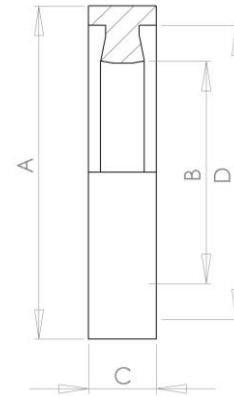
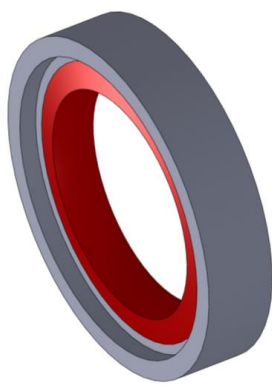
GENERAL INFORMATION

The **Combifit T-seal** is a seal composed of a stainless steel outer ring having a T-shape profile and rubber inner ring vulcanised onto the stainless steel outer ring. The **T-seal** is designed to obtain a hygienic seal in piping connections for food and pharmaceutical processes. These locations are traditional centres for bacteria cultures and regular disassembly often is the only way to clean the unit. Disassembly is expensive and interrupts the production process. Using the **Combifit T-seal** a full Cleaning In Place (C.I.P.) is possible.

If an article is not part of our standard program, please get in touch with COMBIFIT. We are probably able to manufacture according to your needs. Drawings and mold cost € 300,= per size and will be charged only once.



COMBIFIT T-SEAL

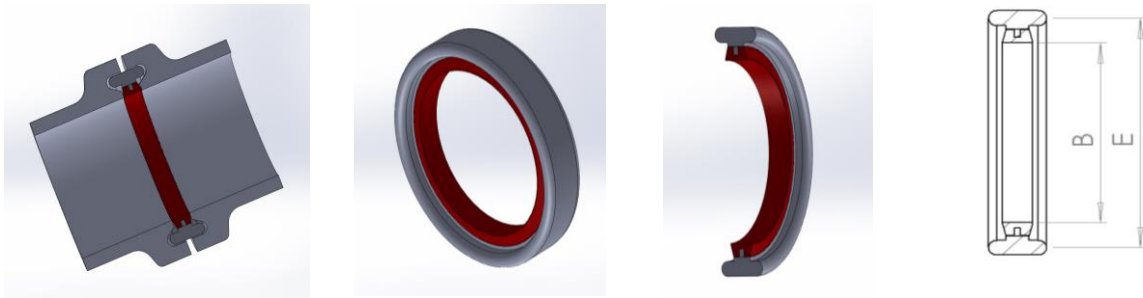


| ISO 2853 | | | | | | | |
|------------------------------------|------|-------|------|-----|-------|----------|------|
| Combifit T-seal Material 1.4301 | Size | A | B | C | D | Art. no. | gram |
| | 1" | 33,7 | 22,6 | 6,8 | 30,0 | VOE-1031 | 15 |
| | 1½" | 47,2 | 35,6 | 6,8 | 43,0 | VOE-1032 | 25 |
| | 2" | 60,0 | 48,6 | 6,8 | 56,6 | VOE-1033 | 31 |
| | 2½" | 74,4 | 60,3 | 6,8 | 70,6 | VOE-1034 | 42 |
| | 3" | 87,0 | 72,9 | 6,8 | 83,0 | VOE-1035 | 52 |
| | 4" | 113,2 | 97,6 | 6,8 | 109,3 | VOE-1036 | 76 |

| Combifit T-seal Material 1.4301 | Size | A | B | C | Art. no. | gram |
|------------------------------------|-------|-------|-------|-----|----------|------|
| | DN15 | 29,0 | 16,0 | 6,8 | DIN-1002 | 14 |
| | DN20 | 33,5 | 20,0 | 6,8 | DIN-1003 | 18 |
| | DN25 | 40,0 | 26,0 | 6,8 | DIN-1004 | 23 |
| | DN32 | 46,0 | 32,0 | 6,8 | DIN-1005 | 27 |
| | DN40 | 52,0 | 38,0 | 6,8 | DIN-1006 | 30 |
| | DN50 | 60,0 | 49,0 | 6,8 | VOE-1033 | 31 |
| | DN65 | 80,0 | 66,0 | 6,8 | DIN-1008 | 46 |
| | DN80 | 95,0 | 81,0 | 6,8 | DIN-1009 | 58 |
| | DN100 | 114,0 | 100,0 | 6,8 | DIN-1010 | 62 |

| BS 4825 part 4 | | | | | | | |
|------------------------------------|------|-------|------|-----|-------|----------|------|
| Combifit T-seal Material 1.4301 | Size | A | B | C | D | Art. no. | gram |
| | 1" | 33,7 | 22,2 | 6,8 | 30,0 | BS-1031 | 15 |
| | 1½" | 47,2 | 34,9 | 6,8 | 43,0 | BS-1032 | 25 |
| | 2" | 60,0 | 47,6 | 6,8 | 56,6 | BS-1033 | 31 |
| | 2½" | 74,4 | 60,3 | 6,8 | 70,6 | BS-1034 | 42 |
| | 3" | 87,0 | 73,0 | 6,8 | 83,0 | BS-1035 | 52 |
| | 4" | 120,0 | 97,6 | 6,8 | 111,6 | BS-1036 | 76 |

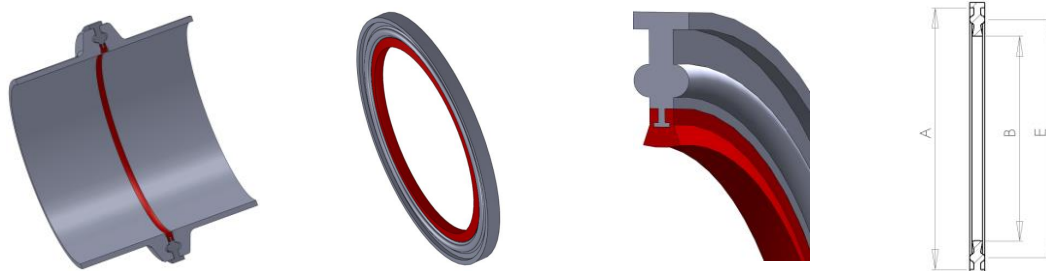
COMBIFIT TRI-CLAMP SEAL



| DIN 32676 (C) | | | | | | | | |
|---|------|---|------|---|---|------|----------|------|
| Combifit Tri-Clamp seal Material 1.4301 | Size | A | B | C | D | E | Art. no. | gram |
| | 1/2" | | 9,50 | | | 20,2 | DIN-2070 | 15 |

| BS 4825 part 3 | | | | | | | | |
|---|------|---|-------|---|---|------|----------|----|
| Combifit Tri-Clamp seal Material 1.4301 | Size | A | B | C | D | E | Art. no. | 14 |
| | 1/2" | | 9,50 | | | 20,3 | BS-2029 | 15 |
| | 3/4" | | 15,85 | | | 20,3 | BS-2030 | 18 |

COMBIFIT TRI-CLAMP SEAL



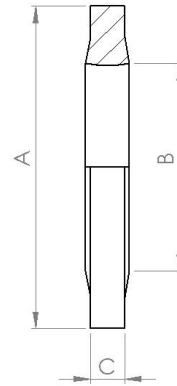
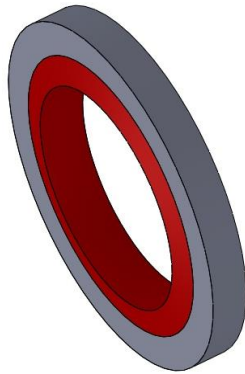
| ISO 2852 | | | | | | | | |
|--|------|-------|------|---|---|-------|----------|------|
| Combifit Tri-Clamp seal Material 1.4301 | Size | A | B | C | D | E | Art. no. | gram |
| | 1" | 50,5 | 22,6 | | | 43,5 | VOE-2031 | 18 |
| | 1½" | 50,5 | 35,6 | | | 43,5 | VOE-2032 | 22 |
| | 2" | 64,0 | 48,6 | | | 56,5 | VOE-2033 | 31 |
| | 2½" | 77,5 | 60,3 | | | 70,5 | VOE-2034 | 40 |
| | 3" | 91,0 | 72,9 | | | 83,5 | VOE-2035 | 52 |
| | 4" | 119,0 | 97,6 | | | 110,0 | VOE-2036 | 76 |

| DIN 32676 (A) | | | | | | | | |
|--|-------|-------|-------|---|---|-------|----------|------|
| Combifit Tri-Clamp seal Material 1.4301 | Size | A | B | C | D | E | Art. no. | gram |
| | DN10 | 34,0 | 10,0 | | | 27,5 | DIN-2001 | 18 |
| | DN15 | 34,0 | 16,0 | | | 27,5 | DIN-2002 | 14 |
| | DN20 | 34,0 | 20,0 | | | 27,5 | DIN-2003 | 18 |
| | DN25 | 50,5 | 26,0 | | | 43,5 | DIN-2004 | 23 |
| | DN32 | 50,5 | 32,0 | | | 43,5 | DIN-2005 | 27 |
| | DN40 | 50,5 | 38,0 | | | 43,5 | DIN-2006 | 30 |
| | DN50 | 64,0 | 50,0 | | | 56,5 | DIN-2007 | 31 |
| | DN65 | 91,0 | 66,0 | | | 83,5 | DIN-2008 | 46 |
| | DN80 | 106,0 | 81,0 | | | 97,0 | DIN-2009 | 58 |
| | DN100 | 119,0 | 100,0 | | | 110,0 | DIN-2010 | 62 |

| DIN 32676 (B) | | | | | | | | |
|--|--------|------|------|---|---|------|----------|------|
| Combifit Tri-Clamp seal Material 1.4301 | Size | A | B | C | D | E | Art. no. | gram |
| | DN21,3 | 50,5 | 18,1 | | | 43,5 | DIN-2054 | |
| | DN33,7 | 50,5 | 29,7 | | | 43,5 | DIN-2056 | |
| | DN48,3 | 64,0 | 44,3 | | | 56,6 | DIN-2058 | |
| | DN60,3 | 77,5 | 56,3 | | | 70,5 | DIN-2059 | |

| BS 4825 part 3 | | | | | | | | |
|--|------|-------|-------|---|---|-------|----------|------|
| Combifit Tri-Clamp seal Material 1.4301 | Size | A | B | C | D | E | Art. no. | gram |
| | 1" | 50,5 | 22,20 | | | 43,5 | BS-2031 | 20 |
| | 1½" | 50,5 | 34,9 | | | 43,5 | BS-2032 | 22 |
| | 2" | 64,0 | 47,6 | | | 56,5 | BS-2033 | 31 |
| | 2½" | 77,5 | 60,3 | | | 70,5 | BS-2034 | 40 |
| | 3" | 91,0 | 73,0 | | | 83,5 | BS-2035 | 52 |
| | 4" | 119,0 | 97,6 | | | 110,0 | BS-2036 | 76 |

COMBIFIT FLAT SEAL



| Combifit Flat seal Material 1.4301 | Size | A | B | C | | | Art. no. | gram |
|---------------------------------------|------|-------|-------|-----|--|--|----------|------|
| | 1" | 32,0 | 22,6 | 3,4 | | | SCH-1001 | 4 |
| | 1,5" | 45,0 | 35,6 | 3,4 | | | SCH-1002 | 7 |
| | 2" | 60,0 | 48,6 | 3,4 | | | SCH-1003 | 10 |
| | 2½" | 69,9 | 60,3 | 3,4 | | | SCH-1004 | 10 |
| | 2¾" | 75,0 | 66,0 | 3,4 | | | SCH-1008 | 11 |
| | 3" | 85,0 | 60,3 | 3,4 | | | SCH-1005 | 17 |
| | 5" | 130,0 | 108,0 | 3,4 | | | SCH-1007 | 51 |
| | DN65 | 79,8 | 66,3 | 3,4 | | | SCH-1006 | 17 |